



# Lynx<sup>®</sup> Smart Satellite



# LYNX<sup>®</sup> SMART SATELLITE










## SMART DESIGN FROM THE INSIDE OUT



Learn more at  
[www.toro.com](http://www.toro.com)



# What is it that makes the Toro® Lynx® Smart Satellite so smart?

-  Toro Lynx Central Control
-  Stronger Than Ever Before\*
-  Water by the Second
-  Current Sensing
-  New Sensor Input kit
-  Wireless or Wired Communication
-  Ease of Use
-  Improved Protection\*
-  Better Performance\*



\* compared to other Toro satellites

## SYSTEM FEATURES

- Support in **7** languages **64** irrigation programs
- 16-64** stations in **16** increments
- up to **32** stations may run simultaneously
- Current sensing on **64** stations and up to **7** input sensors

## SMART SATELLITE SPECIFICATIONS

Line voltage	115-120 or 230-240 VAC, 50/60 Hz (switchable) /130 VA or 100/200 VAC 50/60 Hz
Current Draw (no load)	0.21A (115-120 VAC) or 0.46A (100 VAC)
Current Draw (max load)	0.91A max (115-120 VAC) or 0.99A max (100 VAC)
Current Load max*	3.0A (72VA)
Max load per station*	0.75A (72 VA)
Max load per pump/master valve*	1A (24VA)
Operating Temperature	-10°C to +60°C (14°F to 140°F)
Storage Temperature	-30°C to +65°C (-22°F to 149°F)

\*based on available 24 VAC

**AND**, Lynx Smart Satellite is fully compatible with Lynx VP/Lynx VP®E and Network 8000® systems as an addition or replacement.



# SMART FEATURES:

This new field controller functions under the management of a central computer running Lynx or SitePro, or functions as a stand-alone controller. Lynx Smart Satellite supports wireline or radio communications as well as hybrid communication (wireline and radio).



## LYNX® CENTRAL CONTROL

The Toro Lynx Central Control system makes all essential irrigation information available in a single, intuitive interface to help you save time, water and money. Powerful diagnostics automatically inform you about any problems. Key benefits include:

**Easy Setup** – Lynx gives you a fast, accurate way to program and control your irrigation activities right from your course map.

**Water Savings** – Put water exactly where you want, and easily make edits as your course conditions change.

**Easy Control** – A comprehensive Course Report function supports your scheduled irrigation with system status information, even on manual watering activities.

**Backward Compatible** – For those who have not upgraded to Lynx, the Lynx Smart Satellite is also compatible with the SitePro Central Control system.



Lynx Map

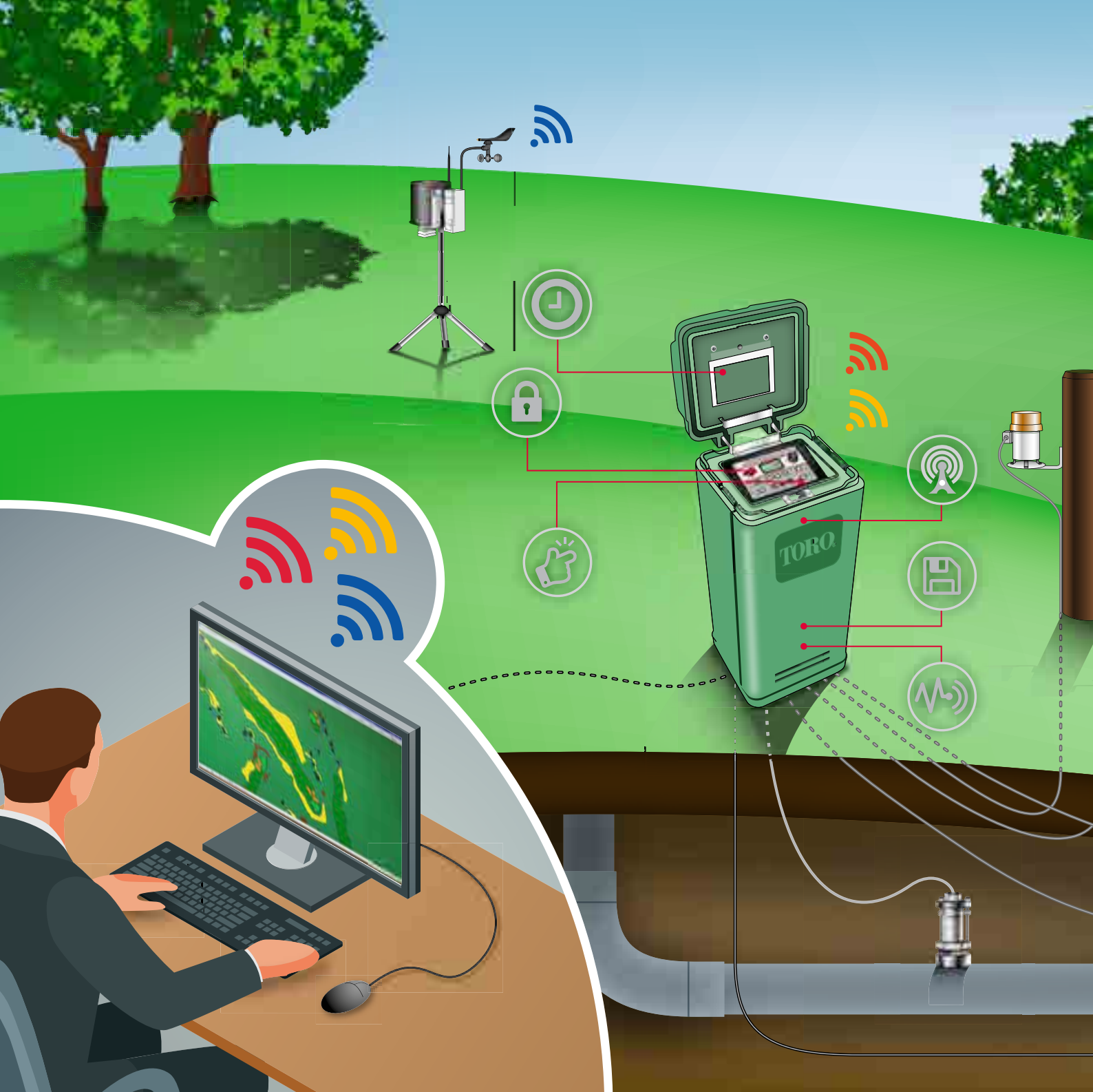


Lynx Handheld



Lynx Barcode

COMING SOON! – LYNX DASH



### **STRONGER THAN EVER BEFORE\***

- Clear vented covers on circuit boards – protection from pests and corrosion
- Stainless steel and plated metal parts – additional corrosion resistance
- Simplified power distribution
- Fewer cable and connectors



### **WATERING BY THE SECOND**

Save water and optimize the course – apply the appropriate amount of water with precision calculated to the second.



### **BETTER PROTECTION LEVEL\***

Each satellite can be password protected so that only people you want can access and program.

Industry-leading lightning surge protection available.



### NEW SENSOR INPUT KIT

Monitor your course from each satellite:

- Water pressure, water flow rate, temperature and rain
- Set alarms and responses to each variable with Lynx (optional: set up in Timing Module for Local mode use)
- LED indicators
- Data accessible in the satellite and periodically uploaded to Lynx
- Sensor data viewable in real-time in Lynx Sensor Dashboard screen



### WIRELESS COMMUNICATION WITH THE NEW DIGITAL RADIO

- Faster and more robust digital or analog configuration
- Frequencies and Transmit Power set at the faceplate
- RSSI-radio signal strength indication logged with each message
- Communication checks with other satellites equipped with a digital radio



### EASE OF USE

- Illuminated display for enhanced visibility
- Larger display and primary functions available in 7 languages (English, Spanish, French, Italian, Chinese, Korean and Japanese)
- Updated user interface for intuitive and productive manual activity
- Firmware updates by USB or over the central computer (coming soon).



### FASTER AND MORE POWERFUL\*

- Microprocessor 15 x faster than previous model
- RAM 16x more memory
- Capacity for future capabilities



### CURRENT SENSING

Always know what is happening to your course – identify and isolate possible electrical problems so the system continues to operate.

\* compared to other Toro satellites





Toro is always there to help you care for your landscapes  
the way you want, when you want, wherever you are.



**toro.com**

Worldwide Headquarters  
The Toro Company  
8111 Lyndale Ave. So.  
Bloomington, MN 55420 U.S.A.  
Phone: (1) 952 888 8801

Printed in Belgium  
©2018 The Toro Company.  
All Rights Reserved.

**GB 200-8111**

**Count on it.**



facebook.com  
twitter.com/TheToroCompany  
youtube.com/ToroCompanyEurope

Join the conversation  
**@ToroGolf**

*Products depicted in this literature are for demonstration purposes only. Actual products offered for sale may vary in use, design, required attachments and safety features. We reserve the right to improve our products and make changes in specifications, design and standard equipment without notice and without incurring obligation. See your dealer for details on all our warranties.*