



# SITWORKS EQUIPMENT CATALOGUE

DINGO® / TRENCHERS / STUMP GRINDERS / TURF RENOVATION & SPECIALTY EQUIPMENT





A man with a beard and arms crossed stands in the foreground, wearing a light-colored t-shirt and jeans. Behind him is a red Toro tracked loader with a front-mounted attachment, parked on a dirt field. The background shows green trees and foliage.

# FROM START ■ TO ■ FINISH

From hardscape to landscape to mowing, our portfolio has you covered with a full range of solutions for the jobs you need to do. No matter what the Toro product, our entire line is designed with input from grounds professionals — and our work is never finished. Our agronomists and engineers continually work on new solutions to increase productivity, conserve water, reduce fuel consumption and improve growing conditions.

The result is a line of products that offers ease of use for operators at every skill level, durability to handle tough conditions, and reliability to minimise downtime and keep your operators productive. Plus, it's all backed by service and support from local Toro distributors who are dedicated to helping customers succeed.

Explore the full line of Toro products for grounds professionals at [toro.com](https://toro.com) and contact your local Toro distributor to learn more.

**100+ Years**  
FOCUSED ON  
Grounds Care

**400+ Patents**  
AROUND THE WORLD  
on Toro Innovations

**More Than 3%**  
OF TOTAL REVENUE  
Is Spent on R&D

**5,000+**  
DEALERS WORLDWIDE  
To Serve You



### Listening to the Industry

Groups of grounds professionals come to Toro's U.S. headquarters to discuss their needs and experiences with Toro engineers and staff. **We take that feedback and use it to develop new features and make our products better.** Continuous improvement always drives us forward.



### Investing in Research

Toro is **committed to investing in product development.** Through our Center for Advanced Turf Technology, leading agronomists and engineers **continually work on new solutions** to increase productivity, conserve water, reduce fuel consumption and improve growing conditions.



### Supporting Contractors

**We offer certified training for your maintenance technicians** so they can get the most from their Toro equipment. **We stand behind our products with service and support at local distributors.** And we support many associations that help advance the industry.



### Heritage

For more than 100 years, The Toro Company has **focused on making equipment to maintain grounds and landscapes.** From operator productivity to promoting healthy grass to conserving precious resources, our roots are in caring for the land.



### Fit For All Types Environments

Toro equipment is used on some of the world's finest golf courses and sports fields, but it's also used in **all kinds of tough applications** — from parks and roadside maintenance to landscape projects and university campuses.



### Your True Partner

Our goal is to be more than a supplier. **We want to be the partner you go to for solutions your business needs.** From day one, Toro has been a company built on treating customers with fairness and respect. Simply put, relationships matter to us.



With deadlines to meet, operators at every skill level, and not enough time for service calls, you need products you can count on. Toro equipment gives you the durability to handle tough conditions and the reliability to keep your operators productive. And it's all backed by service and support from a local distributor who cares about your success.

At Toro, we understand the challenges you face every day because we've been there and we never stop listening to our customers. That means every product we make is designed to meet your needs. From hardscape to landscape to mowing, our portfolio has you covered with a full range of solutions to fit the jobs you need to do.



## **WHEELED DINGO® COMPACT TOOL CARRIER**

# **SAVE LABOUR AND FINISH FASTER**

Access confined spaces you never thought possible with a wheeled Dingo® compact tool carrier. These models offer zero-turn capability, along with a shorter length that's easy to load on a trailer. You also get reliable hydraulic power to use a wide range of attachments. If you do a lot of tasks in tight spaces or on hard surfaces, these are the models for you.





## CHOOSE YOUR FUEL

A powerful Kubota® diesel engine gives the 320-D extra muscle for demanding jobs, so you can dig, haul, plant, build and more. Or choose the 323 petrol Dingo, which extends your working time with two durable 21-litre fuel tanks for a full day of work.

## DINGO® CONTROLS

Responsive controls make the wheeled Dingo highly manoeuvrable:

- 1** Curl or dump the attachment while raising or lowering the loader arms.
- 2** Raise and lower loader arms.
- 3** Traction drive control.
- 4** Activate the auxiliary circuit control lever to power the attachments instantly.



## HIGHLY MANOEUVRABLE

Short wheelbase design offers excellent manoeuvrability. Get into tight spaces where only hand labour could go before.



## TWO TRANSPORT SPEEDS

Low speed sends more hydraulic power to the attachment and high speed sends more power to the wheels. The low speed option also helps new operators shorten their learning curve.



## IMPROVED VISIBILITY

The integrated ride-on operator platform allows improved visibility of the working area and attachments.



## 4-PAW® INDEPENDENT FOUR-WHEEL DRIVE

Four independent wheel motors deliver hydraulic flow and pressure to all four wheels for improved traction and mobility. Fewer moving parts also mean less maintenance.



## **TRACKED DINGO® COMPACT TOOL CARRIER**

# **DO MORE WORK IN LESS TIME**

Tracked Dingo models deliver the durability and reliability that professionals and do-it-yourselfers trust, combined with powerful performance and incredible versatility. For operators who are frequently switching tasks or moving things out of the way, these walk-behind models provide greater productivity — just walk up to the machine and go.

### **REACH HIGHER AND LIFT MORE**

The TX 1000 is a giant step forward in performance and versatility. This lightweight, manoeuvrable machine packs unmatched strength and reach in a compact package for the ultimate working advantage. It's a powerful alternative to skid loaders and other machines.



## GO WHERE YOU NEED TO WORK

The narrow model is just 86 cm (33.7") wide and fits through 100 cm (36") gates. At just 104 cm (41") wide, the wide-track model is also easy to manoeuvre.



Attachment  
Model # 22806

## DIESEL AND PETROL MODELS AVAILABLE

The TX 427 petrol model offers easy maintenance and cold-weather starting. Or choose the diesel TX 525 model for performance in high altitudes and warmer climates, along with more horsepower for attachments.



### UNMATCHED STRENGTH

Vertical lift loader arms allow the TX 1000 to lift and transport heavy loads with a category-leading 488 kg (1,075 lbs).



### MAXIMUM HEIGHT AND REACH

The 206 cm (81") hinge pin height allows attachments to easily clear the side of dumpsters. (TX 1000 only)



### LOW-IMPACT FOOTPRINT

Long-lasting, Kevlar® reinforced tracks disperse weight evenly for a light footprint on turf, while delivering better traction in any ground conditions including sand, mud, gravel, rock, concrete or asphalt.



### EASY-TO-USE PLATFORM

Quickly and easily bolted on to Toro TX 427 & 525 models, this ride-on platform helps minimise operator fatigue when the job requires a lot of hauling or covers substantial distances. The platform can be flipped up – out of the way – any time the operator wishes.



## DINGO® ACCESSORIES

# MANY ATTACHMENTS, ONE GOAL: PRODUCTIVITY

A wide variety of attachments make the Dingo® a more cost-effective choice than a dedicated piece of equipment.

These genuine Toro® attachments are designed specifically for the Dingo, offering the best assurance of long life and peak performance.



Attachment  
Model # 22445

### TORO® QUICK ATTACH SYSTEM

Change Attachments In Seconds

1. Mount to the attachment plate on the unit.
2. Twist the pins to locked position.
3. For powered attachments, connect hydraulic lines to dripless flush-face quick couplers on loader arms.



#### TREE FORK

Hydraulic fork arm opens to handle large trees and shrubs. Angle design allows for gentle handling.



#### ADJUSTABLE FORKS

Easily adjust forks to desired width. Carry fence posts, rocks, pallets, plants, fertiliser, irrigation supplies and more. Forks constructed of high-strength steel.



#### BORE DRIVE HEAD AND ROD & REAMER KIT

Easily bore under driveways and sidewalks to simplify irrigation and cable installations. Rod and reamer kit sold separately.



#### VIBRATORY PLOW

Reduce time spent on irrigation or cable installations. The vibratory plow optimizes pipe-pulling performance while minimising turf damage. Tight turning radius allows for manoeuvring in confined spaces.



#### TRENCH FILLER

Two sets of opposing augers direct spoils into the hole. Standard float mechanism allows for up to 12.7 cm (5") of ground following flotation. Skids evenly disperse weight and slide easily over turf, minimising damage.



## TRENCHING, PLOWING AND BORING

Model #	Attachment Description	Dimensions (W x L x H)	Weight (kg)
22420	Bore Drive Head Attachment (Bore diameter 3.2-8.9 cm)	61 cm x 56 cm x 63.5 cm	54.4
22421	Rod and Reamer (Bore diameter 3.2-11.3 cm)	-	26.3
22472	Trench Filler	122 cm x 79 cm x 56 cm	186
22473	High-Torque Trencher Head	89 cm x 165 cm x 61 cm	177
22474	High-Speed Trencher Head	89 cm x 165 cm x 61 cm	177
22911	Vibratory Plow	74 cm x 89 cm x 61 cm	181.4

\*Working Width

## AUGER BITS AND EXTENSIONS

Model #	Attachment Description
22814	46 cm (18") Auger Bit
22815	61 cm (24") Auger Bit
22816	76 cm (30") Auger Bit
22818	30 cm (12") Auger Bit Extension
22819	61 cm (24") Auger Bit Extension
22820	15 cm (6") Full Flight Auger Bit
22821	23 cm (9") Full Flight Auger Bit
22822	30 cm (12") Full Flight Auger Bit
22823	38 cm (15") Full Flight Auger Bit

## AUGERS AND TREE CARE

Model #	Attachment Description	Dimensions (W x L x H)	Weight (kg)
22429	Stump Grinder (w/chip guard)	112 cm x 51 cm x 79 cm	120
22438	Tree Fork (max load 82 kg)	62 cm x 114 cm x 32 cm	77
22341	Adjustable Fork	79 cm x 114 cm x 69 cm	73
22577	Grapple Rake	90 cm x 46 cm x 76 cm	120
22805	High-Torque Auger Power Head	61 cm x 41 cm x 58 cm	83
22806	Universal Swivel Auger Power Head	61 cm x 43 cm x 58 cm	89



Attachment  
Model # 22473



### HIGH-SPEED TRENCHER

Ideal for fast, efficient trenching in most soil conditions. 61 cm (24"), 91.4 cm (36") and 122 cm (48")\* booms available. \*Longer optional spoils auger recommended for 122 cm (48") boom.



### HIGH-TORQUE TRENCHER HEAD

Guarantees performance in difficult soil conditions. 61 cm (24"), 91.4 cm (36") and 122 cm (48")\* booms available. \*Optional spoils auger recommended for 122 cm (48") boom.



### STUMP GRINDER

Rugged design and incredible hydraulic power, the Toro stump grinder will make powder of the toughest stumps. Grinds down as far as 42 cm (16.5") below grade.



### HIGH-TORQUE AUGER POWER HEAD

Designed specifically to power up to 76 cm diameter augers in the toughest soil conditions. Auger bits from 15 cm (6") to 76 cm (30").



### UNIVERSAL SWIVEL AUGER POWER HEAD

Ensures "plumb" holes on uneven terrain up to 46 cm (18"). Perfect for installing fences.



### GRAPPLE RAKE

Grab, drag, lift and place brush and debris easily with up to 1,361 kg (3,000 lbs) of clamping force at the tine tips.

## DINGO® ACCESSORIES

# GET THE JOB DONE

Uses for the Toro® Dingo and its various attachments are limited only by your imagination.



Attachment  
Model # 22805



Attachment  
Model # 22577



### POWER BOX RAKE

Perfect tool for seed or sod bed preparation. Carbide-teeth rotary drum pulverises rough soil, cuts high spots and fills low spots in one pass. Adjustable yoke allows 20° offset.



### TILLER

Hardened steel tines for any soil condition, including clay or hardpan. Till more than 15 cm (16") deep and 102 cm (40") wide on one pass. Reversible tine direction frees jams.



### SOIL CULTIVATOR

Bury stones, soil clods, debris and grass. Prepares seed bed in one pass, tilling soil up to 14 cm (5.5") deep. Adjustable grading bar and comb teeth leave perfect germination environment.



### CEMENT BOWL

Flighting mixes and holds cement in bowl. Mix, haul, and pour up to 91 kg (200 lbs.) Auger power head required (sold separately).



### LEVELER

Grade, finish, and spread topsoil and other landscape materials. Back fill trenches. Carry job site materials such as plants, fertiliser, irrigation supplies, and more.



### MULTI-PURPOSE TOOL

Plant and haul trees or dig and breakup soil with the 3-in-1 ripper, towbar and boom.



## EARTH MOVING EQUIPMENT

Model #	Attachment Description	Dimensions (W x L x H)	Weight (kg)
22426	Direct Drive Power Box Rake	122 cm x 124 cm x 53 cm	166
22445	102 cm (40") Tiller	112/102 cm Tilling Width x 51 cm x 66 cm	165
23102	Soil Cultivator	130 cm x 130 cm x 53 cm	165
23165	Leveler	80 cm x 105 cm x 69 cm	73

## BUCKETS

Model #	Attachment Description	Dimensions (W x L x H)	Weight (kg)	Capacity (litres)
22409	4 cu.ft. Standard Bucket	107 cm x 61 cm x 35,6 cm	52	110
22410	Loose Materials Bucket	122 cm x 66 cm x 46 cm	79	180
22520	Narrow Bucket	88 cm x 68 cm x 64 cm	69	100
22340	TX 1000 Standard Bucket	104 cm x 58 cm x 38 cm	78	120
22342	TX 1000 High Volume Bucket	135 cm x 74 cm x 43 cm	115	250

## MATERIAL HANDLING

Model #	Attachment Description	Dimensions (W x L x H)	Weight (kg)
22423	Multi-Purpose Tool	61 cm x 10 cm x 25 cm	18
-	Boom Jib*	2 cm x 82 cm x 24 cm	10.5
-	Scarifier Teeth*	5 cm x 33 cm x 30 cm	4
22442	Cement Bowl		34
22414	Utility Blade	122 cm x 64 cm x 53 cm	96

\* Available in Multi-Purpose Tool (22423)

## MISCELLANEOUS

Model #	Attachment Description	Weight (kg)
22475	TX Platform (Petrol)	43
22476	TX Platform (Diesel)	43
22417	Counter Weight	83



Attachment  
Model # 22426



### UTILITY BLADE

Backfill trenches, move or smooth dirt or even use to clear snow.



### MANUAL OR HYDRAULIC FORKS

Transport and position trees and large shrubs exactly where you want them with exceptional manoeuvrability.



### BUCKETS

Perfect for light-duty grading, levelling, and material handling. Buckets vary in capacity from 120 to 250 litres (4.3 cu. ft. to 9 cu. ft.) for lighter materials.

## TRX WALK-BEHIND TRENCHERS

# POWER AND SIMPLICITY SAVE YOU TIME

Toro TRX walk-behind trenchers are now more efficient and powerful than ever. We've improved our lineup with two new models that combine the groundbreaking maneuverability the TRX walk-behind trencher is known for with even better performance and serviceability.

New design enhancements make these models easier to operate, thanks to improved hydraulics and streamlined controls. Plus, new Intelli-Trench™ technology automatically adjusts the hydraulic flow — putting power where you need it so you can maximize productivity. Plus, with significantly fewer parts, the newer models require less maintenance.



**PLEASE NOTE:** TRX-16 model 22972 remains unchanged and does not have any of the new design features of the TRX-250 and TRX-300



### EASY-TO-LEARN CONTROLS

The TRX's streamlined controls are easy to learn and operate. The new design includes the familiar TRX trencher valve handle and boom lift lever, as well as independent traction control for the left track and the right track.

### SIMPLIFIED SERVICE

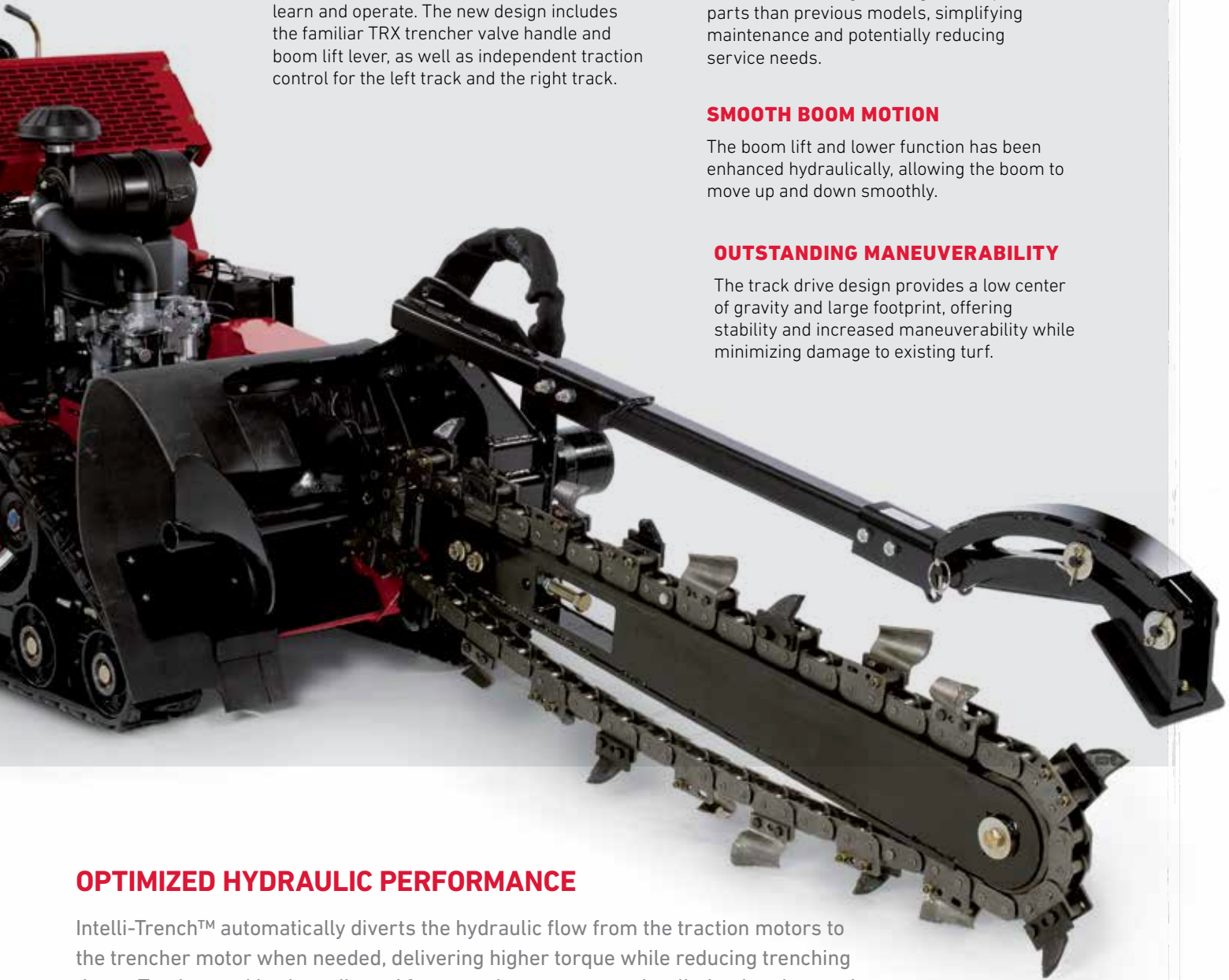
The new TRX design has significantly fewer parts than previous models, simplifying maintenance and potentially reducing service needs.

### SMOOTH BOOM MOTION

The boom lift and lower function has been enhanced hydraulically, allowing the boom to move up and down smoothly.

### OUTSTANDING MANEUVERABILITY

The track drive design provides a low center of gravity and large footprint, offering stability and increased maneuverability while minimizing damage to existing turf.



### OPTIMIZED HYDRAULIC PERFORMANCE

Intelli-Trench™ automatically diverts the hydraulic flow from the traction motors to the trencher motor when needed, delivering higher torque while reducing trenching times. Track speed is also adjusted faster and more accurately, eliminating the need for constant manual adjustment of the traction controls.



## TREE CARE

# RELIABILITY DAY IN AND DAY OUT

Unlike some stump grinders, Toro's design is not over-complicated. STX models feature Dingo® TX-style controls with two simple levers that are easy to learn and use. With tracked models that travel easily over muddy areas, Intelli-Sweep™ for optimal cutting performance, and transport speeds of over 6 km/h (4 mph), it's the perfect combination for maximum productivity.



### WELL-BALANCED FOR LESS EFFORT

The easy-to-operate SGR-13 handlebar stump grinder turns stumps into mulch without breaking a sweat. Rubber gaskets between components minimise vibrations for a smoother cutting experience. Plus, the exclusive cutter wheel features 12 easily replaceable grinder teeth to simplify maintenance.





### TORO'S PATENTED, EASY-TO-USE CONTROLS

offer smooth operation with fewer levers/knobs than conventional stump grinders. An armrest near the joystick also reduces operator fatigue.

- 1 Steering system (forward, reverse, turn) allows for zero-turn capability
- 2 Sweep, lift/lower and engagement of the grinder head



### STX STUMP GRINDER ADVANTAGES:

- Get optimal performance time with the hydraulically driven head — no chance of expensive belts breaking or slipping, no adjusting tension, and no clogged pulleys or clutches to replace.
- Maintain optimal performance with the Intelli-Sweep™ feature that automatically adjusts the sweep speed based on the load on the cutting wheel.
- Operate with confidence, thanks to the tracked design that offers exceptional side hill stability, as well as zero turn capability.



### ADDED PERFORMANCE FEATURES

The STX-38 gives you superior climbing capability, manoeuvrability and greater side hill stability with a hi-drive track system. The electronic fuel injection (EFI) engine also offers easier starting, lower maintenance and improved performance. In addition, the all-hydraulic sweep control valve facilitates side-to-side feathering for superior stump grinding.



### OPERATOR-FRIENDLY DESIGN

The STX-26 also offers the Intelli-Sweep feature, along with an offset cutting head that gives the operator excellent visibility to the stump. This model features Toro's exclusive traction control system similar to Dingo TX and TRX trenchers, making it easy for new operators to learn and use.

## TURF RENOVATION

# DURABLE AND EASY TO MANOEUVRE

Toro's line of Turf Renovation equipment include the perfect tools for landscape contractors or homeowners with user-friendly controls, durable construction, and manoeuvrability to make overseeding an easy task.







### 51 CM (20") HYDRAULIC SLIT SEEDER

- Solid, high-carbon, heat-treated spring steel blades can handle abuse without chipping or bending and effectively verticut into the top thatch layer to improve turf health and ensure seed-to-soil contact.
- Larger seed hoppers and seed flow that can be adjusted on the fly ensure productivity and ease-of-use in any application.



### 61 CM (24") STAND-ON AERATOR

- Electronic depth control allows operators to provide consistent core depth and quality
- Compact design profile fits through standard 91 cm (36") wide gates
- New Smart Hour Meter displays core depth and critical maintenance reminders

Model #	Hydraulic Slit Seeder 23508*
Engine	Kohler® Command PRO® CH395
Fuel Capacity	6.05 L (1.6 gallons)
Working Width	51 cm (20")
Depth	Up to 2.54 cm (1")
Width	76.2 cm (30")
Height	71.12 cm (28") (handle folded) 114.3 cm (45") (handle working)
Length	68.58 cm (27") (handle folded) 132.08 cm (52") (handle working)
Weight	117.9 kg (260 lbs)
Ground Speed	(3 mph) fwd / (2.2 mph) rev
Hopper Capacity	18.1 kg (40 lbs)
Blades	10 verticutting blades

\*fitted with CE kit 135-6822

Model #	24" Stand-On Aerator* 29516
Engine	Kohler® CH440
Fuel Capacity	7 liters (1.85 gallons)
Working Width	61 cm (24")
Depth	Up to 12.7 cm (5")
Width	90 cm (35.5")
Height	130 cm (51")
Length	174 cm (68.6")
Weight	388 kg (856 lbs)
Ground Speed	Up to 11 km/h (6.8 mph) fwd Up to 3.5 km/h (2.2 mph) rev
Coverage (per hour)	1.3 acres
Tines/Blades/Broom	36 tines

\*fitted with CE kit 135-7423



### NEW! 51 CM HYDRAULIC SLIT SEEDER (23508)

The seed flow rate can be adjusted on the fly for different applications and seed types.



### NEW! 61 CM STAND-ON AERATORS (39517) with Spreader Attachment (33525)

## **TURF RENOVATION & SPECIALTY EQUIPMENT**

# **EASILY CLEAR TOUGH STUMPS AND BRUSH**

When you need to prepare a site for landscaping, you need equipment that works with your crew, not against it. Toro's tree care equipment is designed to deliver the perfect combination of user-friendly operation and easy handling to keep operators working efficiently all day, every day. Plus, with Toro's commercial-grade durability, you can count on reliable performance job after job, even in challenging conditions.







### POWER BROOM 38700

Steering	Power steering with clutch left & right hand
Transmission	Friction Disc
Fuel Capacity	4.0 L
Broom Angle	40° total - 20° left/20° right
Broom Width	96 cm with 18 wafers
Broom Diameter	63.5 cm
Broom Speed	200 RPM
Broom Drive	Direct
Weight	158.7 kg
Starter	Recoil
Tyres	38 cm x 12.7 cm



### BRC-28 Brush Cutter 23522

Model #	
Cutting Width	71 cm (28")
Cutting Height	9.5 cm (3-3/4")
Engine	Toro 14.5 hp
Electric Start	Standard
Fuel Capacity	3.8 litre (1 gallon)
Deck	50 ksi high strength steel Pivoting +/- 10 degrees w/spring return
Spindle Diameter	6 cm (1-3/8")
Transaxle	Hydrogear T2
Dimensions (LxWxH)	226 cm x 76 cm x 107 cm (89" x 30" x 42" )
Weight	170 kg (375 lbs.)
Warranty	1 Year or 1,000 Operating Hours (See Operator's Handbook for Terms & Conditions)



#### POWER STEERING

The Power Broom's Power Steering enables wheels to be disengaged independently or simultaneously with trigger controls - making turning, reversing and steering easy for anyone.



#### HARDWORKING PERFORMANCE

The Toro BRC-28 hydro drive brush cutter levels brush, tall weeds, saplings and heavy vegetation with ease. This model features a pivoting deck with a flail blade that handles brush up to 1.8 m (6') tall and saplings up to 5 cm (2") in diameter. Standard electric start, large fuel tank capacity and the 71 cm (28") cutting deck increase operator productivity. You can also easily manoeuvre this powerful machine in both forward and reverse with the one-hand control feature.

# DINGO RANGE



## DINGO TX 1000 SPECIFICATIONS

		DINGO TX 1000 NARROW TRACK 22327	DINGO TX 1000 WIDE TRACK 22328
DIMENSIONS	A Wheelbase	104 cm (41")	
	B Ground Clearance	15 cm (6.0")	
	Overall Width	86 cm (33.7")	104 cm (41")
	C Overall Length	256 cm (100.7") w/bucket; 208 cm (81.7") w/o bucket	
	D Overall Height	135 cm (53.2")	
	E Max Operating Height	267 cm (105")	
	F Hinge Pin Height	206 cm (81")	
	G Dump Height	155 cm (61")	
	H Dump Angle	40 degrees	
	I Reach - Fully Raised	62 cm (24.5")	
ENGINE	Ground Speed (F/R)	6.1 km/h (3.8 mph)	7.6 km/h (4.7 mph)
	Weight	1263 kg (2,785 lbs)	1266 kg (2,790 lbs)
	Tip Capacity	1,296 kg (2,857 lbs)	1,393 kg (3,071 lbs)
	Rated Operating Capacity (35% of Tip Capacity)*	454 kg (1,000 lbs)	488 kg (1,075 lbs)
	Engine	Kubota® D1305	
	Manufacturer's Gross HP Rating at RPM**	18.6 kW (24.9 HP) @ 2600 rpm	
	Displacement	1262cc (77 cu. in.)	
	Fuel Type	Diesel	
	Air Filter	Heavy-duty, remote	
	Cooling System	Liquid Cooled	
OPERATION	Fuel Tank	44 litres (11.5 gallons)	
	Oil Capacity	5.7 litres (6.0 quarts)	
	Loader Arms	Vertical	
	Hydraulic Pressure	206.8 bar (3,000 psi)	
TRACKS	Hydraulic Flow	Traction: 13.3 gpm (each pump); Auxiliary: 14.3 gpm	
	Reservoir Capacity	57.5 litres (10 gallons)	
TRACKS	Tracks	Sprocket-drive, 6 road wheels per side	
	Traction	Dual hydrostatic pump	
	Track Length x Width	324 cm x 15 cm (127.6" x 5.9")	324 cm x 24 cm (127.6" x 9.5")
	Ground Pressure	0.39 bar (5.6 psi)	0.25 bar (3.6 psi)

\* Per ISO 14397-1

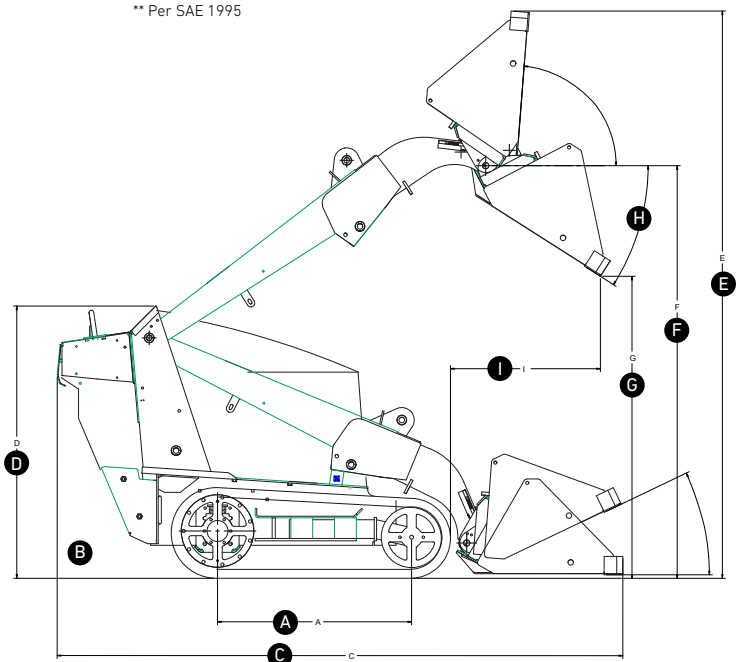
\*\* Per SAE 1995

## DINGO TX 427 & TX 525 SPECIFICATIONS

		TX 525 22323	TX 525 WIDE 22324
DIMENSIONS	A Wheelbase	79 cm (31.2")	
	B Ground Clearance	11.7 cm (4.6")	
	Overall Width	85.6 cm (33.7")	104 cm (41")
	C Overall Length	233.7 cm (92") w/bucket; 180 cm (70.7") w/o bucket	
	D Overall Height	117.1 cm (46.1")	
	E Max Operating Height	229 cm (90.1")	
	F Hinge Pin Height	167.1 cm (65.8")	
	G Dump Height	117.1 cm (46.1")	
	H Dump Angle	38 degrees	
	I Reach - Fully Raised	55.4 cm (21.8")	
ENGINE	Ground Speed (F/R)	0-7.2 km/h (0-4.5 mph) / 0-3.2 km/h (0-2.0 mph)	
	Weight	864 kg (1,904 lbs)	907 kg (2,013 lbs)
	Tip Capacity	717 kg (1,580 lbs.)	
	Rated Operating Capacity (35% of Tip Capacity)*	251 kg (553 lbs.)	
	Engine	Kubota D902	
	Manufacturer's Gross HP Rating at RPM**	17.3 kW (23.3 HP) @ 3400 rpm	
	Displacement	901cc (55 cu. in.)	
	Fuel Type	Diesel	
	Air Filter	Heavy-duty, remote	
	Cooling System	Liquid Cooled	
OPERATION	Fuel Tank	23 litres (6.0 gallons)	
	Oil Capacity	3.63 litres (3.84 quarts) 2.95 litres (2.0 quarts)	
	Loader Arms	Radial	
	Hydraulic Pressure	206.8 bar (3,000 psi)	
TRACKS	Hydraulic Flow	Traction: 16.9 gpm (each pump); Auxiliary: 13.8 gpm	
	Reservoir Capacity	40 litres (10.5 gallons)	
TRACKS	Tracks	Sprocket-drive, 10 road wheels per side	
	Traction	Dual hydrostatic pump	
	Track Length	245 cm x 15 cm (96.6" x 5.9")	245 cm x 24 cm (96.6" x 9.5")
	Ground Pressure	0.34 bar (5.0 psi)	0.24 bar (3.5 psi)

\* Per ISO 14397-1

\*\* Per SAE 1995







## DINGO 323 & 320-D SPECIFICATIONS

TX 427 22321	TX 427 WIDE 22322
79 cm (31.2")	
11.7 cm (4.6")	
85.6 cm (33.7")	104 cm (41")
233.7 cm (92") w/bucket; 180 cm (70.7") w/o bucket	
117.1 cm (46.1")	
229 cm (90.1")	
167.1 cm (65.8")	
117.1 cm (46.1")	
38 degrees	
21.8" (55.4 cm)	
0-7.2 km/h (0-4.5 mph) / 0-3.2 km/h (0-2.0 mph)	
854 kg (1,882 lbs)	902 kg (1,990 lbs)
694 kg (1,530 lbs.)	
243 kg (535 lbs.)	
Kohler Command Pro Series CH 740	
20.1 kW (25 HP) @ 3600 rpm	
725cc (44 cu. in.)	
Gas	
Heavy-duty, remote	
Air Cooled	
23 litres (6.0 gallons)	
2.95 litres (2.0 quarts)	
Radial	
206.8 bar (3,000 psi)	
Traction: 16.9 gpm (each pump); Auxiliary: 11.4 gpm	
40 litres (10.5 gallons)	
Sprocket-drive, 10 road wheels per side	
Dual hydrostatic pump	
245 cm x 15 cm (96.6" x 5.9")	245 cm x 24 cm (96.6" x 9.5")
0.34 bar (5.0 psi)	0.24 bar (3.5 psi)

	DINGO 323 22318	DINGO 320-D 22337CP
A Wheelbase	71 cm (28")	
B Ground Clearance	15 cm (5.8") front & rear	
Overall Width	103 cm (40.5") standard tires; 90 cm (35") narrow tires	
C Overall Length	208.8 cm (82.2") w/bucket; 157.5 cm (62") w/o bucket	
D Overall Height	123.7 cm (48.7")	
E Max Operating Height	231.6 cm (91.2")	
F Hinge Pin Height	167.6 cm (66")	
G Dump Height	119 cm (47")	
H Dump Angle	34 degrees	
I Reach – Fully Raised	71.1 cm (28")	
Ground Speed (F/R)	0-6 km/h (0-3.7 mph) / 0-6 km/h (0-3.7 mph)	0-4.8 km/h (0-3.0 mph) / 0-4.8 km/h (0-3.0 mph)
Weight	711 kg (1,567 lbs)	781 kg (1,722 lbs)
Tip Capacity	467 kg (1,030 lbs)	146 kg (1,048 lbs)
Rated Operating Capacity (50% of Tip Capacity)*	234 kg (515 lbs.)	238 kg (524 lbs.)
Engine	Kohler® Command Series CH23	Kubota D722
Manufacturer's Gross HP Rating at RPM*	17.2 kW (23 HP) @ 3600 rpm	14.9 kW (20 HP) @ 3600 rpm
Displacement	674cc (41 cu. in.)	719 cc (43.88 cu. in.)
Fuel Type	Gas	Diesel
Air Filter	Heavy-duty, remote	
Cooling System	Air Cooled	Liquid Cooled
Fuel Tank	42.4 litres (11.2 gallon)	15 litres (4 gallon)
Oil Capacity	1.9 litres (2 quarts)	3.2 litres (3.4 quarts)
Loader Arms	Radial	
Hydraulic Pressure	224.1 bar (3,250 psi)	
Hydraulic Flow	10.8 gpm high-flow hydraulic circuit, 4 gpm low-flow hydraulic circuit	
Reservoir Capacity	64 litres (17 gallons)	56 litres (14.8 gallons)

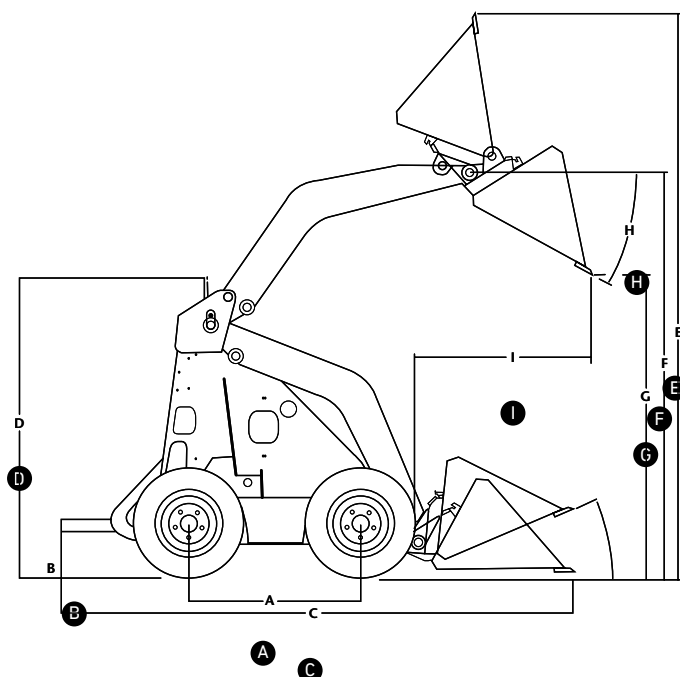
\* Per ISO 14397-1

\*\* Per SAE 1995

## DIMENSIONS

- A Wheelbase
- B Ground Clearance
- C Overall Length
- D Overall Height
- E Maximum Operating Height
- F Hinge Pin Height
- G Dump Height
- H Dump Angle
- I Reach

We reserve the right to improve our products and make changes in specifications, design and standard equipment without notice and without incurring obligation.



# STX RANGE



## STX 38, 26, & SGR 13 SPECIFICATIONS

		STX 38 23214	STX 26 23208
ENGINE	Engine	Kohler® Command PRO® ECV980 980cc (28.3 kW) 38 hp 4-cycle petrol air-cooled engine	Kawasaki® FX-730V 726cc (19.3 kW) 26 hp 4-cycle petrol air-cooled engine
	Cooling System	Air	Air
	Fuel Tank	18 litres (4.8 gallons)	18 litres (4.8 gallons)
	Oil Capacity	1.9 litres (2 quarts)	1.8 litres (1.9 quarts)
	Starter	Electric Start	Electric Start
	Hour Meter	Standard	Standard
	Transport Speed	7.2 km/h (4.5 mph)	7.2 km/h (4.5 mph)
HYDRAULIC SYSTEM	Flow Rate	57 L/min (15 gpm) to each side; gear pump with a flow rate of 75.7 L/min (20 gpm) to the piston engine that drives the cutting head	51.1 L/min (13.5 gpm) hydraulic flow to cutter head; 38 L/min (10 gpm) of hydraulic flow to each track
	Capacity	38 litres (10 gallons)	23 litres (6.1 gallons)
	Hydraulic Oil Cooler	Standard	Standard
TRACK	Size, Material	15 cm (5.9") wide – endless nylon reinforced rubber track	15 cm (5.9") wide – endless nylon reinforced rubber track
	Track Drive	Sprocket-drive; 3 road wheels per side Traction dual hydrostatic pump	Sprocket-drive; 3 road wheels per side Traction dual hydrostatic pump
RAD	Cutting Wheel	57 cm (22.4") Diameter to Tooth, 2.5 cm (1") Thick, 16 Greenteeth® Cutting Teeth	48 cm (18.9") Diameter to Tooth, 1.9 cm (.75") Thick, 12 Greenteeth Cutting Teeth
	Cutting Depth	46 cm (18.1") Below Grade	32 cm (12.6") Below Grade
	Cutting Height	88 cm (34.6") Above Grade	88 cm (34.6") Above Grade
	Head Swing	132 cm (52") radius x 60° sweep arc	120 cm (47") radius x 90° sweep arc
DIMENSIONS	Weight	794 kg (1750.5 lbs)	544 kg (1199.3 lbs)
	Dimensions (LxWxH)	241 cm x 87 cm x 130 cm (94.8" x 34.2" x 51.1")	198 cm x 87 cm x 122 cm (78" x 34.2" x 48")



Model #	SGR 13 22619
Engine	Honda GX390
Clutch	Centrifugal
Wheel	24.3 cm (9.5") diameter cutter wheel
Cutter Depth	28 cm (11") below grade
Cutter Height	36 cm (14") above grade
Belt	Double 3V Belt
Dimensions (WxLxH)	75 cm x 193 cm x 107 cm (30" x 76" x 42")
Weight	109 kg (240 lbs)
Warranty	1 Year or 1,000 Operating Hours (See Operator's Handbook for Terms & Conditions)



# TRX RANGE



## TRX 16, 250 & 300 SPECIFICATIONS

		TRX-16 22972	TRX-250 22983	TRX-300 22984
POWER SYSTEM	Engine	14.5 hp (10.8 kW) @ 3,600 rpm Kawasaki® FS481V, V-twin	24.5 hp (18.3 kW) @ 3,600 rpm Toro® V-twin	26.5 hp (19.8 kW) @ 3,600 rpm Kohler® ECV749, EFI
	Cooling System	Air		
	Fuel Tank	7.9 liters (2.1 gallons)	15.1 liters (4.0 gallons)	
	Oil Capacity	1.7 liters (1.8 quarts)	2.4 liters (2.5 quarts)	1.9 liters (2.0 quarts)
	Start Method	Recoil	Electric	
	Hour Meter	Standard		
	Transport Speed	3.9 km/h (2.4 mph) / 2.4 km/h (1.5 mph) 64.3 m/min (211 ft/min) / 40.2 m/min (132 ft/min)	3.7 km/h (2.3 mph) / 2.4 km/h (1.5 mph) 61.6 m/min (202 ft/min) / 40.2 m/min (132 ft/min)	3.7 km/h (2.3 mph) / 2.4 km/h (1.5 mph) 61.6 m/min (202 ft/min) / 40.2 m/min (132 ft/min)
HYDRAULIC SYSTEM	Hydraulic Pressure	200 bar (2,900 psi)	184 bar (2,670 psi)	180 bar (2,610 psi)
	Hydraulic Flow	Trencher: 38 lpm (10.0 gpm)  Traction (each pump): 36 lpm (9.5 gpm)	Trencher: 50.0 lpm (13.2 gpm) Traction: 61.3 lpm (16.2 gpm) Transport 11.4 lpm (3.0 gpm) Trenching	Trencher: 50.0 lpm (13.2 gpm) Traction: 61.3 lpm (16.2 gpm) Transport 11.4 lpm (3.0 gpm) Trenching
	Reservoir Capacity	23.8 liters (6.3 gallons)	23.8 liters (6.3 gallons)	23.8 liters (6.3 gallons)
	Hydraulic Oil Cooler	Standard	Standard	Standard
HEADSHAFT SPEED		226 rpm with 211.67 m/kg (315 ft/lbs) of torque	210 rpm with 334.64 m/kg (498 ft/lbs) of torque	210 rpm with 334.64 m/kg (498 ft/lbs) of torque
TRACKS	Width	15 cm (5.9") wide – endless nylon reinforced rubber	15 cm (5.9") wide – endless nylon reinforced rubber	15 cm (5.9") wide – endless nylon reinforced rubber
	Drive	Sprocket-drive, 3 road wheels per side	Sprocket-drive, 3 road wheels per side	Sprocket-drive, 3 road wheels per side
	Traction	Dual hydrostatic pump	Two-section hydraulic pump with two hydraulic motors (one for each track)	Two-section hydraulic pump with two hydraulic motors (one for each track)
GROUND PRESSURE		61 cm (24") boom = 0.28 bar (4.1 psi) 91 cm (36") boom = 0.30 bar (4.3 psi) 122 cm (48") boom = 0.30 bar (4.4 psi)	61 cm (24") boom = 0.28 bar (4.1 psi) 91 cm (36") boom = 0.30 bar (4.4 psi) 122 cm (48") boom = 0.31 bar (4.5 psi)	61 cm (24") boom = 0.28 bar (4.1 psi) 91 cm (36") boom = 0.30 bar (4.4 psi) 122 cm (48") boom = 0.31 bar (4.5 psi)
DIMENSIONS	Overall Dimensions with 24" Boom Up & Chain (WxLxH)	86 cm x 210 cm x 117 cm (33.8" x 82.5" x 46")	86 cm x 210 cm x 117 cm (33.8" x 82.5" x 46")	86 cm x 210 cm x 117 cm (33.8" x 82.5" x 46")
	Wheelbase	58 cm (23")	58 cm (23")	58 cm (23")
	Weight	505 kg (1,114 lbs)	501 kg (1,104 lbs)	505 kg (1,114 lbs)
BOOM OPTIONS	Depths	61 cm, 91 cm and 122 cm (24", 36" and 48")	61 cm, 91 cm and 122 cm (24", 36" and 48")	61 cm, 91 cm and 122 cm (24", 36" and 48")
	Widths	10 cm and 15 cm (4-in and 6-in)	10 cm and 15 cm (4-in and 6-in)	10 cm, 15 cm and 20 cm (4, 6 and 8"-in)

\*20 cm (8-in) chain conversion kit available through parts only

**PLEASE NOTE:** TRX-16 model 22972 remains unchanged and does not have any of the new design features of the TRX-250 and TRX-300



## WHEN WE SAY **COUNT ON IT**, WE MEAN IT

Every product that carries the Toro brand is backed by over 100 years of history, innovation and timeless dependability. We never stop investing in research and development to give our customers the latest features. That's why Toro is one of the best-known, most trusted brands in the business — and why your next mower should be a Toro. We also stand behind our products with a nationwide network of knowledgeable dealers for parts and service support. **Real People. Real Support.**

**Smart Features. Proven Dependability.**



**toro.com**

Worldwide Headquarters  
The Toro Company  
8111 Lyndale Ave. So.  
Bloomington, MN 55420 U.S.A.  
Phone: (1) 952 888 8801  
Fax: (1) 952 887 8258

©2019 The Toro Company.  
All Rights Reserved.

20-701-master

Products depicted in this literature are for demonstration purposes only. Actual products offered for sale may vary in use, design, required attachments and safety features. We reserve the right to improve our products and make changes in specifications, design and standard equipment without notice and without incurring obligation. See your distributor for details on all our warranties.



facebook.com  
twitter.com/TheToroCompany  
youtube.com/ToroCompanyEurope