



Introduction – What is turfRad?

turfRad is an advanced soil moisture mapping solution that helps golf courses optimize playing conditions and conserve natural resources.

Using patented L-band microwave sensing technology, turfRad quickly collects thousands of high-resolution, root-zone soil moisture measurements with no extra labor.



Key Features

- Subsurface moisture mapping using patented L-band technology.
- Automatic data upload provides actionable information in real time.
- Rugged and waterproof sensor built for durability.
- GPS-enabled measurements for precise mapping.

How It Works

Harnessing Space Technology for Golf Course Management

The European Space Agency has used L-band microwave sensing for over a decade to measure global soil moisture from space. TerraRad Tech miniaturized this technology into a portable, high-resolution sensor to bring the power of satellite data to the ground.

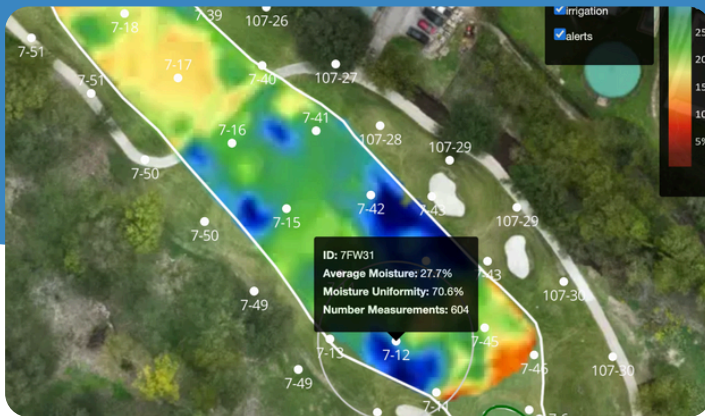


How turfRad Works

1. **Mounted Sensor** – Easily mounts on to a golf course mower or UTV.
2. **Continuous Measurement** – Captures 10 measurements per second.
3. **Automatic Data Upload** – Transfers data via Wi-Fi.
4. **Generates Moisture Maps** – Provides visual soil moisture insights.

How It Creates Value

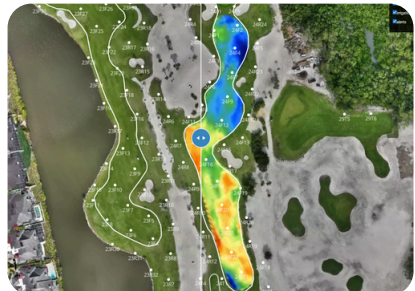
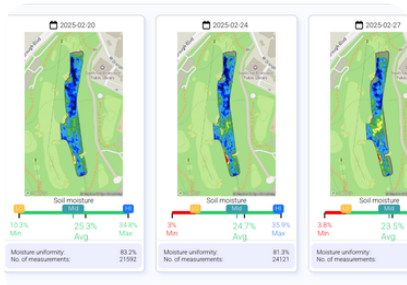
Actionable Information for Course Management



Features to Monitor Soil Moisture Trends

Card View: Consecutive days side by side to track moisture trends over time with key stats in one window.

Compare View: Swipe to seamlessly compare moisture data on the same fairway across different days.



With a one-time sensor investment and an annual subscription, golf courses gain continuous, precise moisture insights to maximize efficiency and sustainability.

For more information, visit www.hako.se/turfrad www.turfrad.com
or contact nathan.borlowen@hako.se





For more information contact nathan.borlowen@hako.se

www.hako.se/turfrad/

www.turfrad.com